



# MORNING MANTRA



Daily Derivatives & Market Report

July 23, 2025



Indian equity benchmarks ended near day's high points on Wednesday, with both the Nifty and Sensex closing over half a percent higher, supported by positive sentiments around the ongoing Q1FY26 earnings season. Markets made a positive start and sustained their upward momentum throughout the session, buoyed by strong global cues as President Donald Trump's announcement of new trade agreements with Japan and the Philippines, fueling hopes for broader progress in international trade.

Some of the important factors in today's trade:

**Cabinet approves FTA between India and UK:** Traders took some support as the cabinet approved the free trade agreement (FTA) between India and the UK, which will be signed in London on July 24, 2025. The pact, officially called as comprehensive economic and trade agreement, will be signed during Prime Minister Narendra Modi's visit to London.

**India submits ratification document of TEPA with EFTA bloc:** Sentiments remained upbeat as Commerce and Industry Minister Piyush Goyal has said that India submitted the ratification document of the free trade agreement with the four-European nation bloc EFTA to Norway. The pact, officially dubbed as Trade and Economic Partnership Agreement (TEPA), will be implemented from October 1, 2025.

**806 applications approved so far under PLI schemes for 14 sectors:** Traders also took a note of Minister of State for Commerce and Industry Jitin Prasada's statement that as many as 806 applications have been approved under the Production Linked Incentive (PLI) schemes across 14 sectors as on date.

**Global front:** European markets were trading in green, while Asian markets ended in green, as prospects of a trade agreement between the U.S. and EU increased after U.S. President Donald Trump announced trade deals with Japan and Philippines.

# MARKET SELFIE



## MARKET SUMMARY

Domestic Indices	Close	Points	% Change
SENSEX	82726.64	539.83	0.66
NIFTY	25219.90	159	0.63
MIDCAP	46858.25	112.67	0.24
SMLCAP	55214.90	28.46	0.05
BSEFMC	20586.19	-94.73	-0.46
HEALTHCARE	45012.69	314.73	0.70
AUTO	53870.98	459.60	0.86
POWER	6910	18.17	0.26
REALTY	7526.56	-201.06	-2.60
BSE IT	36358.33	106.07	0.29
BANKEX	63908.32	473.88	0.75
OIL GAS	27775.19	157.86	0.57
METAL	31861.03	145.44	0.46
INDIA VIX	10.51	-0.23	-2.21

## ADVANCE - DECLINE

Index	Advance	Decline	Unchanged
NSE	1497	1460	98
BSE	1933	2097	168

## MARKET TURNOVER (₹ in Crs)

Segment	Current	Previous	Net %
BSE CASH	9602	7596	26
NSE CASH	93826	100574	(7)
NSE F&O	150746	134910	12

## KEY INDICES RATIOS

INDEX	P/E	P/B	Dividend Yield
NIFTY	22.29	3.48	1.30
SENSEX	23.69	4.40	1.20

# KEY NUMBERS TRACKER



## FII – DII ACTIVITY IN CASH SEGMENT (₹ in Crs)

FII-DII*	Buy	Sell	Net
DII	13410	10465	2945
FII	13168	15591	(2422)

Note: FPI & DII Figures are provisional

## FII ACTIVITY IN DERIVATIVES SEGMENT (₹ in Crs)

FII	Buy	Sell	Net
Ind. Futures	2430.86	1670.85	760
Ind. Options	952687.24	954244.37	(1557)
Stk. Futures	21152.56	19891.88	1261
Stk. Options	30998.21	30837.01	161

## PUT-CALL RATIO

Index	Current	Previous
NIFTY	0.98	0.70
BANK NIFTY	0.95	0.74

## DOLLAR INDEX

Dollar Index	Current	Previous	% Change
DXY	97.30	97.39	-0.10

## 10-YEARS G-SEC YIELD

Country	Current	Previous	% Change
INDIA	6.312	6.309	0.00
USA	4.390	4.337	0.05

## KEY COMMODITIES TRACKER (in \$)

Commodity	Current	Change Points	% Change
Gold	3387.91	-39.66	-1.15
Silver	39.17	-0.06	-0.14
Crude-Oil	65.22	-0.21	-0.33
Brent-Crude	68.47	-0.26	-0.38

# CURRENCY FUTURES & INDEX TRENDS TRACKER



## CURRENCY FUTURES

Expiry	Close	Change Points	% Change
29 JULY-25 USD-INR	86.46	0.01	0.01
29 JULY-25 EUR-INR	101.39	0.25	0.25
29 JULY-25 GBP-INR	117.03	0.46	0.39
29 JULY-25 JPY- INR	59.08	0.26	0.44

## INDICES – SUPPORT-RESISTANCE-PIVOT LEVELS

Index	Close	S2	S1	Pivot	R1	R2
NIFTY	25061	24946	25004	25093	25150	25239
SENSEX	82187	81851	82019	82279	82446	82706
NIFTY FUTURES	25094	24991	25043	25121	25173	25251
BANK NIFTY	56756	56317	56537	56911	57131	57506
CNX IT	36859	36642	36751	36936	37044	37229
CNX MIDCAP	59103	58642	58873	59270	59501	59898
CNX SMALLCAP	18893	18749	18821	18951	19023	19153
INDIA VIX	10.75	10.35	10.55	10.89	11.09	11.43

## INDEX TREND ANALYSIS

Index	Daily	Weekly	Monthly
NIFTY	Buy	Neutral	Buy
SENSEX	Neutral	Neutral	Buy
NIFTY FUTURES	Neutral	Neutral	Buy
BANK NIFTY	Buy	Neutral	Buy
CNX IT	Sell	Sell	Neutral
CNX MIDCAP	Buy	Buy	Buy
CNX SMALLCAP	Neutral	Buy	Buy
INDIA VIX	Sell	Sell	Neutral

## SECURITIES BAN IN F&O TRADES FOR 23-07-2025

IEX, RBLBANK, BANDHANBNK

# TECHNICAL VIEWS



## NIFTY

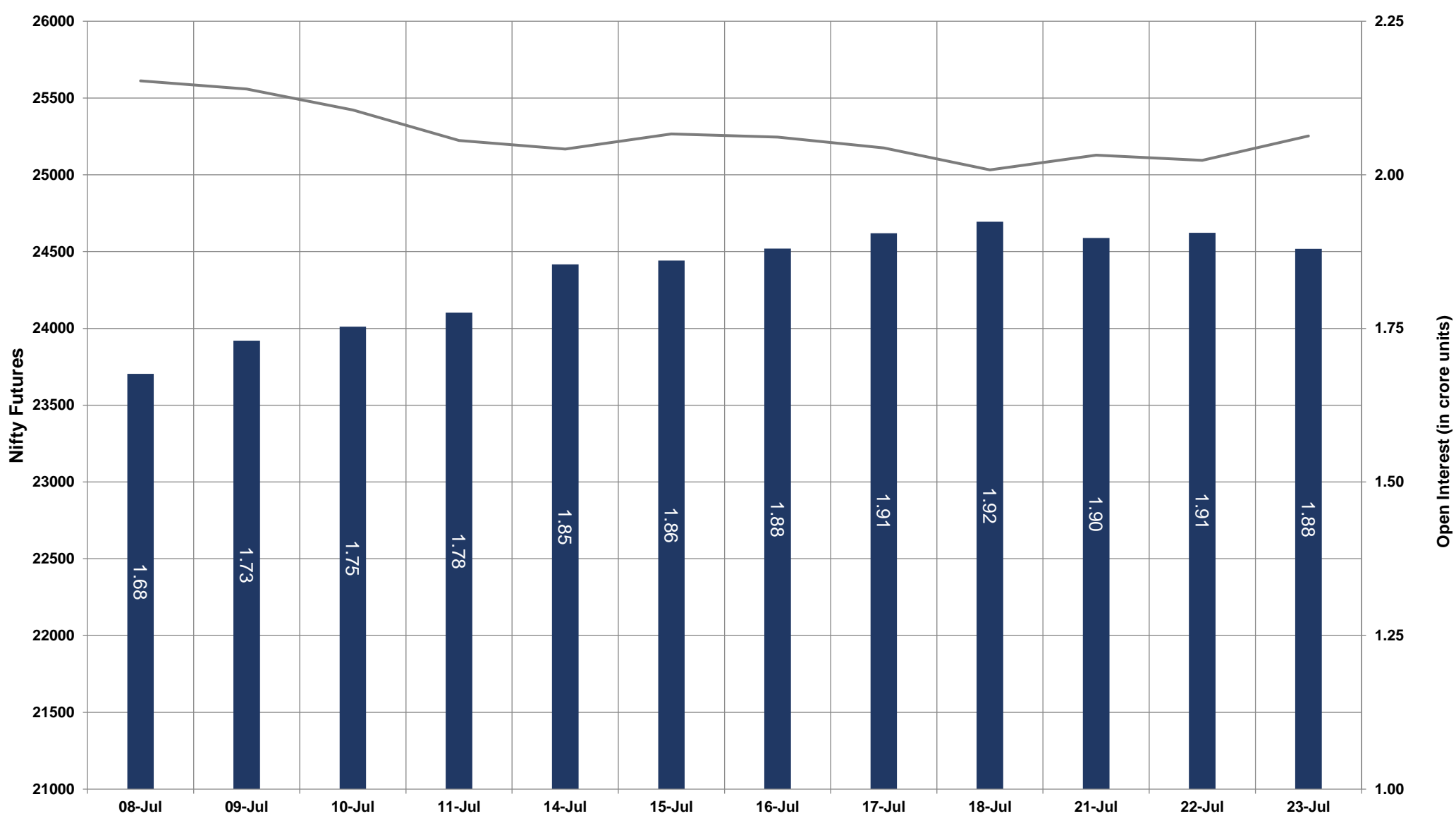


- Nifty Cash = **25219.90 (0.63%)**
- Resistance levels = **25280** and **25350**
- Support levels = **25150** and **25080**

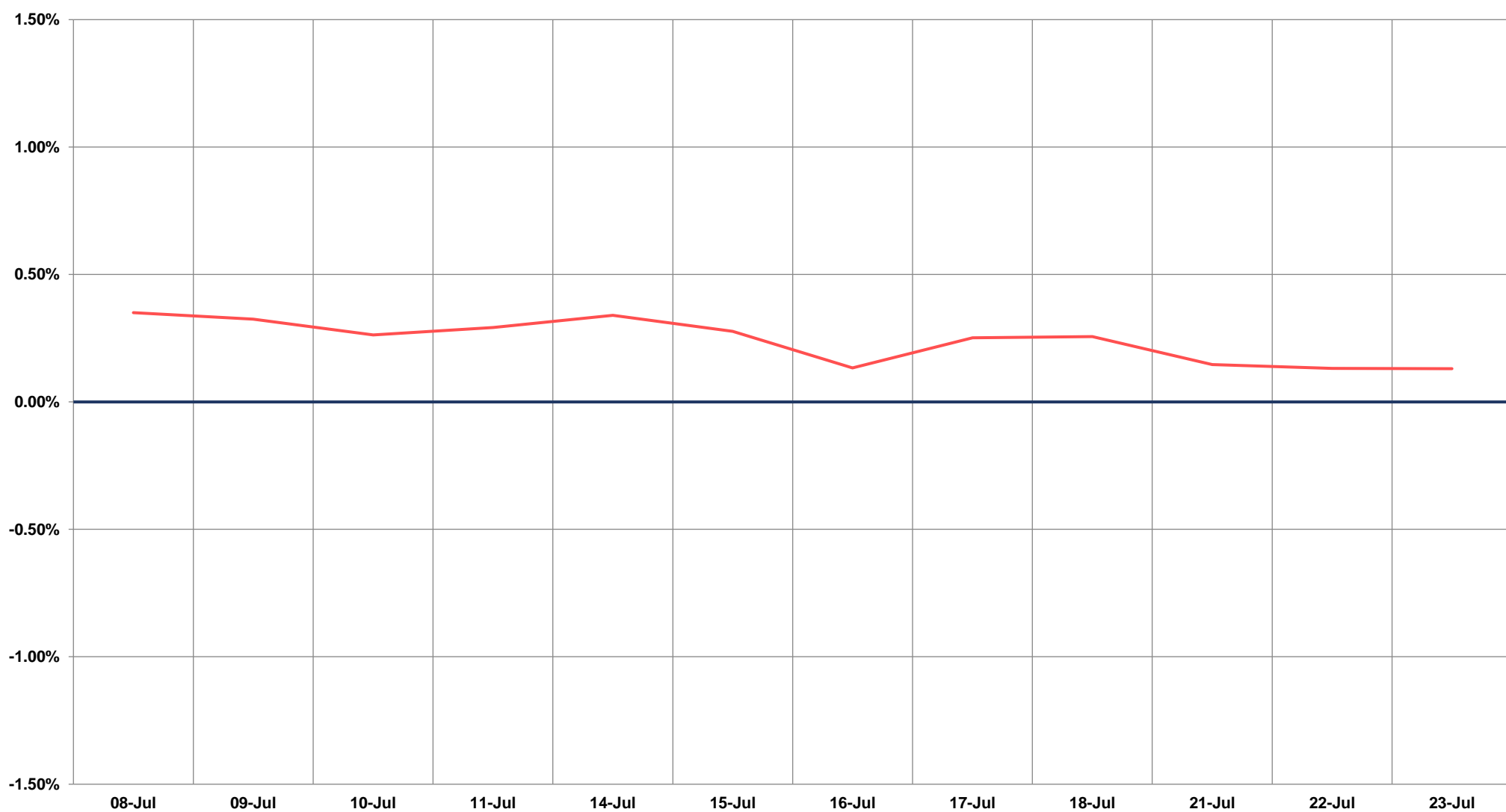
# TECHNICAL VIEWS



## NIFTY FUTURES



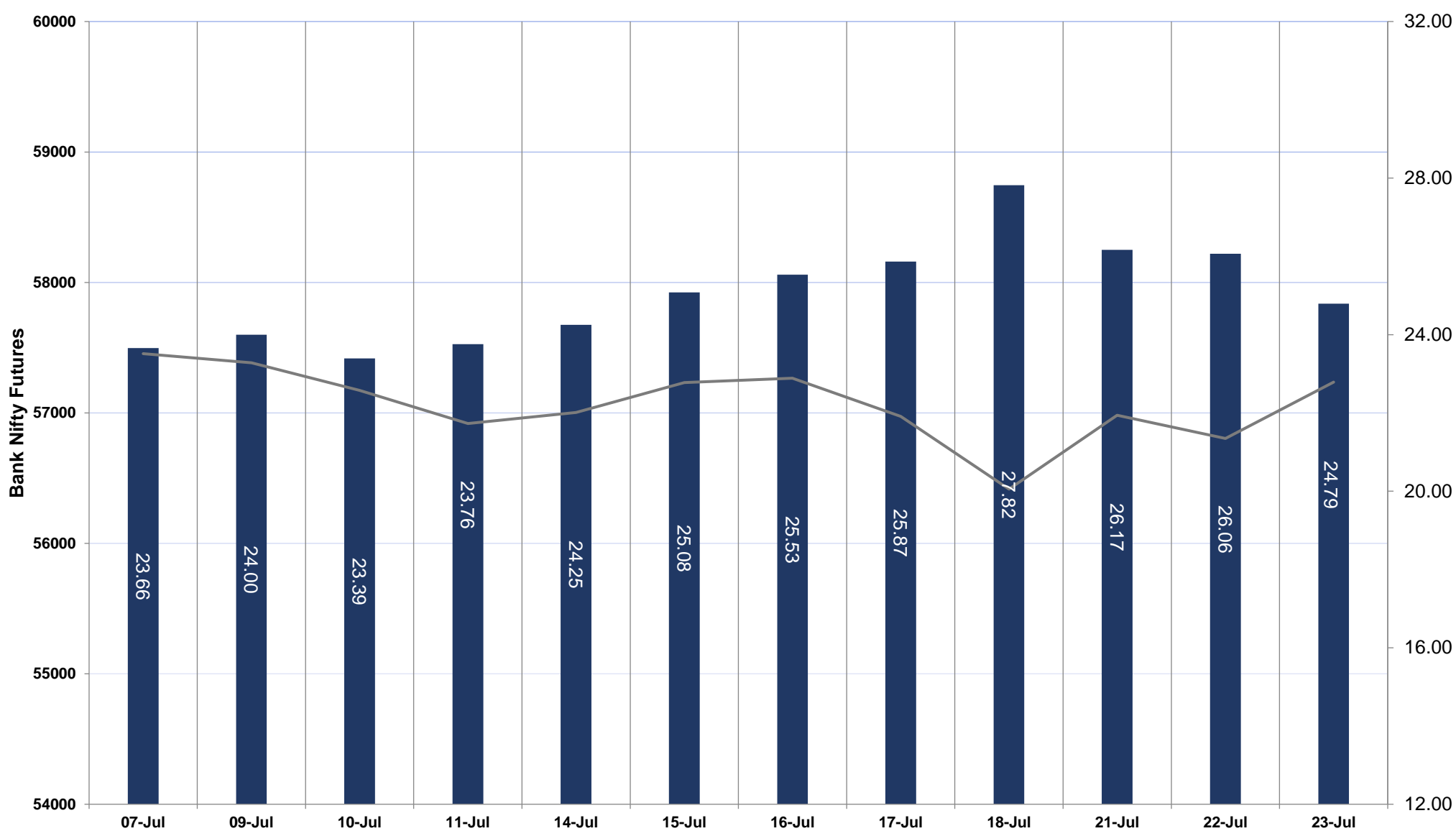
## SPREAD: FUTURE & SPOT



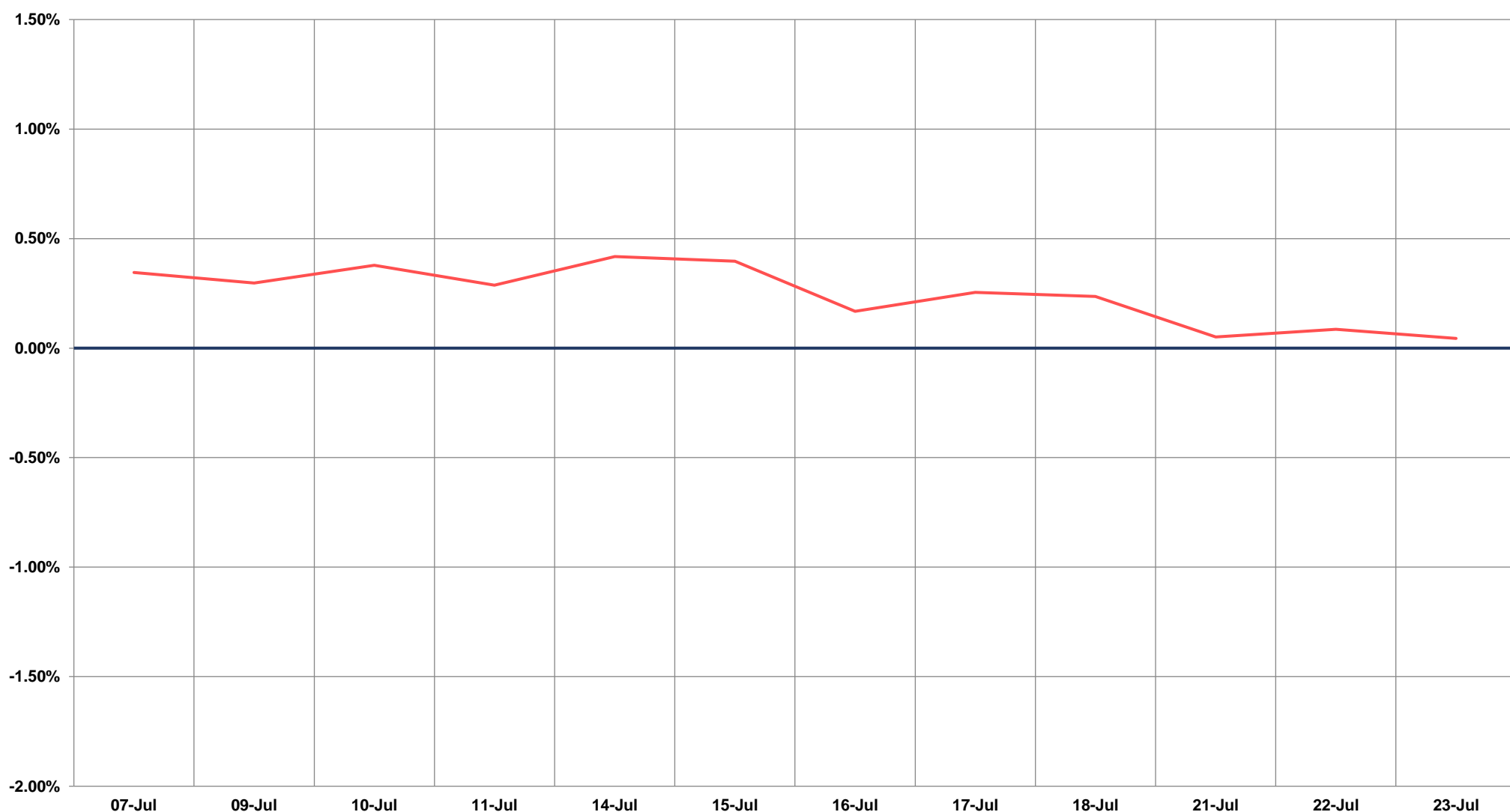
# TECHNICAL VIEWS



## BANK NIFTY FUTURES



## SPREAD: FUTURE & SPOT

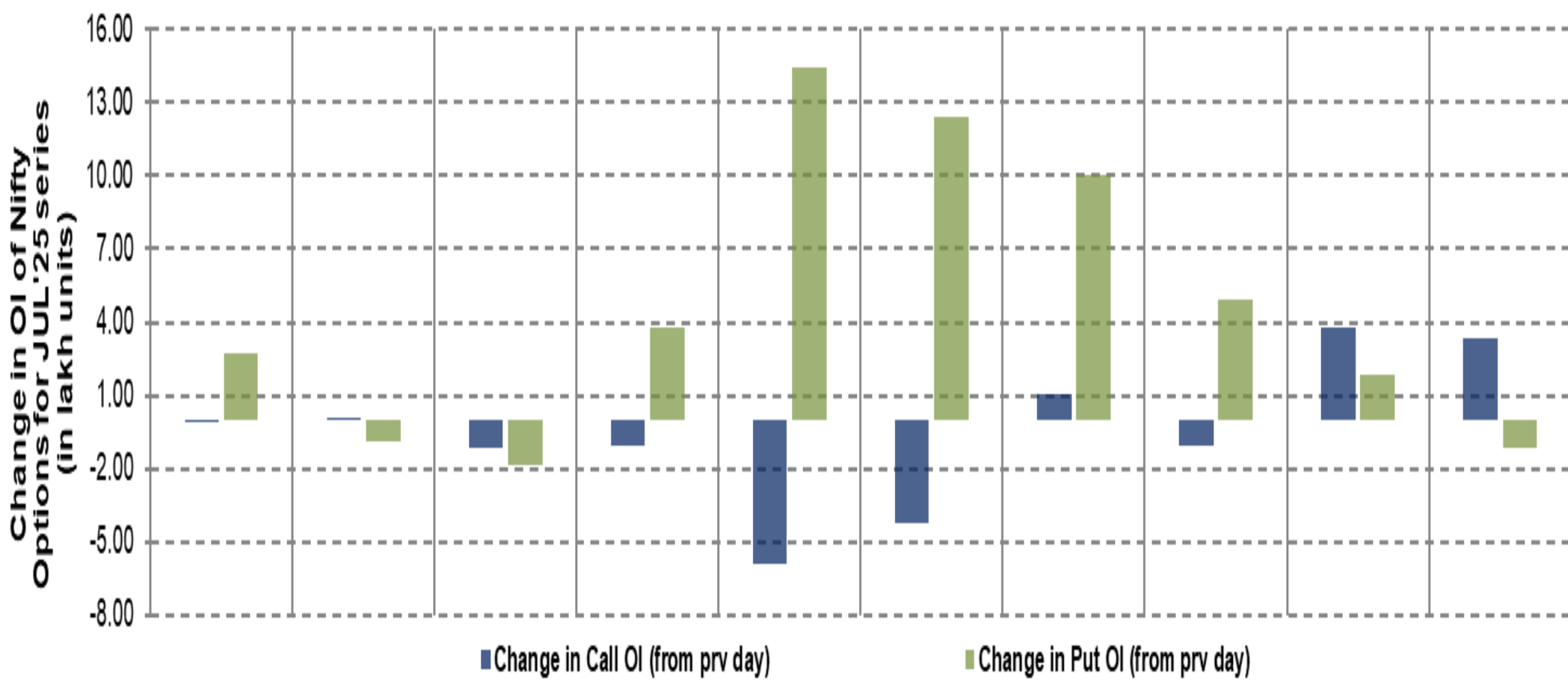
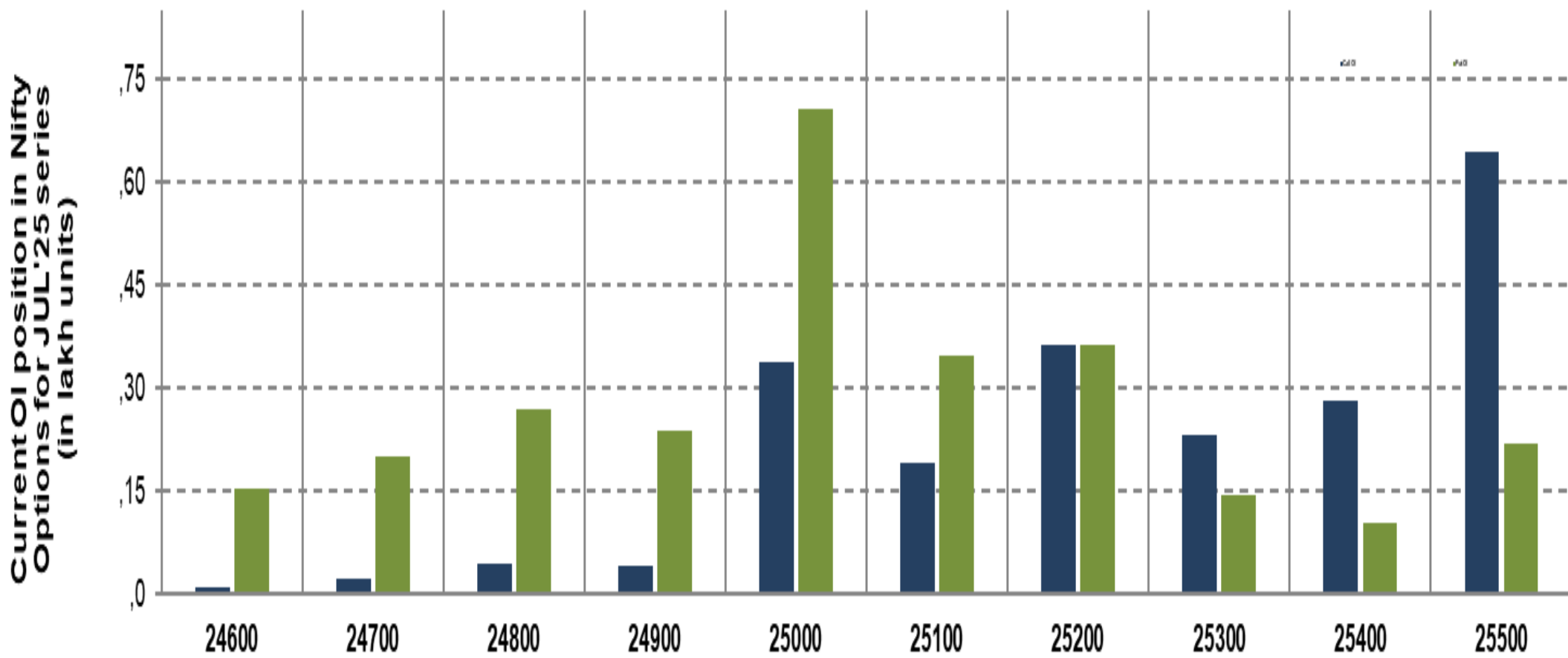




# TECHNICAL VIEWS



## NIFTY OPTIONS



- **Most Active Nifty Call** with an subtraction of **-0.58 million** in Open Interests is **Strike Price of 25000**
- **Most Active Nifty Put** with a addition of **1.44 millions** in Open Interests is **Strike Price of 25000**
- **Maximum Open Interest** an outstanding was **6.45 millions** for Calls at **Strike Price of 25500**
- **Maximum Open Interest** an outstanding was **7.06 millions** for puts at **Strike Price of 25000**

# Disclaimer



The Information provided by SMS or in newsletter or in any document has been prepared by Shah Investor's Home Ltd (SIHL). The Information provided by SMS or in newsletter does not constitute an offer or solicitation for the purchase or sale of any financial instrument or as an official confirmation of any transaction. The information contained herein is from publicly available data or other sources believed to be reliable, but we do not represent that it is accurate or complete and it should not be relied on as such. SIHL or any of its affiliates/ group companies shall not be in any way responsible for any loss or damage that may arise to any person from any error in the information contained in this report or SMS. This Information provided by SMS, reports or in newsletter is provided for assistance only and is not intended to be and must not alone be taken as the basis for an investment decision. The user assumes the entire risk of any use made of this information. Each recipient of this Information provided by SMS, report or in newsletter should make such investigation as it deems necessary to arrive at an independent evaluation of an investment in the securities of companies referred to in this information provided by SMS, report or in newsletter (including the merits and risks involved), and should consult his own advisors to determine the merits and risks of such investment. The investment discussed or views expressed may not be suitable for all investors. This information is strictly confidential and is being furnished to you solely for your information.

The information should not be reproduced or redistributed or passed on directly or indirectly in any form to any other person or published, copied, in whole or in part, for any purpose. The information provided by report or SMS is not directed or intended for distribution to, or use by, any person or entity who is a citizen or resident of or located in any locality, state, country or other jurisdiction, where such distribution, publication, availability or use would be contrary to law, regulation or which would subject SIHL and affiliates/ group companies to any registration or licensing requirements within such jurisdiction. The distribution of this Information provided by SMS or in newsletter in certain jurisdictions may be restricted by law, and persons in whose possession this Information provided by SMS or in newsletter comes, should inform themselves about and observe, any such restrictions. The information given or Information provided by SMS, report or in newsletter is as of the date of the issue date of report or the date on which SMS provided and there can be no assurance that future results or events will be consistent with this information. This information is subject to change without any prior notice. SIHL reserves the right to make modifications and alterations to this statement as may be required from time to time. However, SIHL is under no obligation to update or keep the information current.

Nevertheless, SIHL is committed to providing independent and transparent recommendation to its client and would be happy to provide any information in response to specific client queries. Neither SIHL nor any of its affiliates, group companies, directors, employees, agents or representatives shall be liable for any damages whether direct, indirect, special or consequential including lost revenue or lost profits that may arise from or in connection with the use of the information. Past performance is not necessarily a guide to future performance. The disclosures of interest statements incorporated in the Information provided by SMS, report or in newsletter are provided solely to enhance the transparency and should not be treated as endorsement of the views expressed in the report. The analyst for this report certifies that all of the views expressed in this report accurately reflect his or her personal views about the subject company or companies and its or their securities, and no part of his or her compensation was, is or will be, directly or indirectly related to specific recommendations or views expressed in this report.